



Magup Inc.

Tel (416) 293-9972

Fax (416) 291-2999

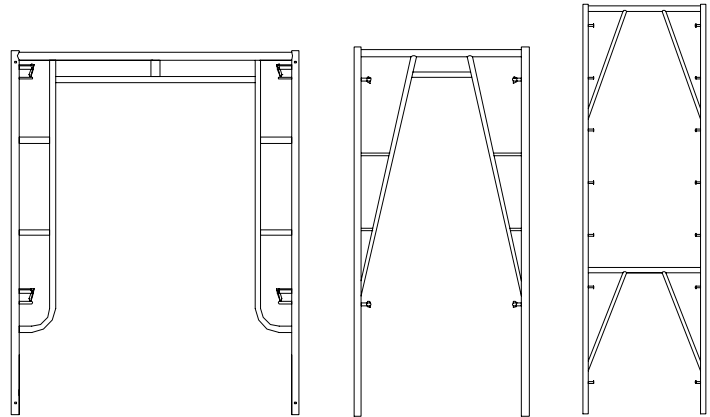
TECHNICAL SPECIFICATIONS

FRAME SCAFFOLD

FRAMES

1. TYPE OF FRAME:

- WALK THRU FRAMES
- SINGLE LADDER FRAMES
- DOUBLE LADDER FRAMES



2. FRAME TUBING SIZES:

LEGS & HEADERS

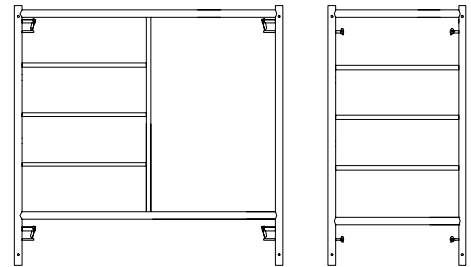
1.625" O.D. X 0.095" W.T.;

1.69" O.D. X 0.095" W.T.;

INTERIOR TUBES:

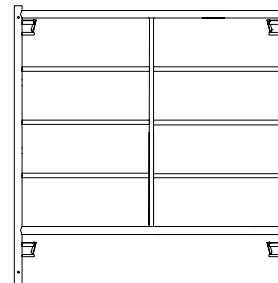
1.0" O.D. X 0.079" W.T.;

1.26" O.D. X 0.079" W.T.;



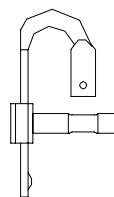
3. SURFACE FINISH:

- PAINTED
- HOT DIP GALVANIZED
- POWDER COATED

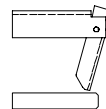


4. FRAME LOCKS

- FAST LOCK;
- FLAP LOCK;
- FLIP LOCK;
- DROP LOCK;
- RIVET LOCK;
- C LOCK;



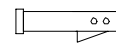
Fast Lock



Flap Lock



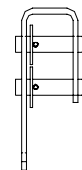
Flip Lock



Drop Lock



Rivet Lock



"C" Lock

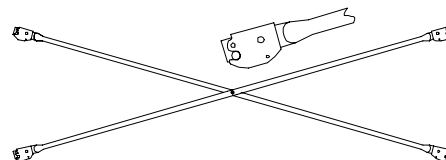
5. OTHERS:

- ALL TUBING JOINTS ARE COPED AND MIG WELDED
- 1" COLLAR COUPLING PINS INCLUDED

CROSS BRACES

1. TYPE OF CROSS BRACES:

- SNAP ON STYLE;
- PUNCHED HOLE STYLE;





Magup Inc.

Tel (416) 293-9972

Fax (416) 291-2999

TECHNICAL SPECIFICATIONS

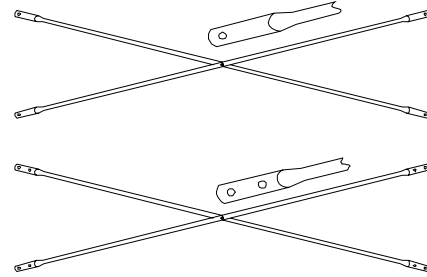
DOUBLE PUNCHED HOLE STYLE;

2. BRACE TUBING SIZES:

1"O.D. X 0.073"W.T.;

3. SURFACE FINISH:

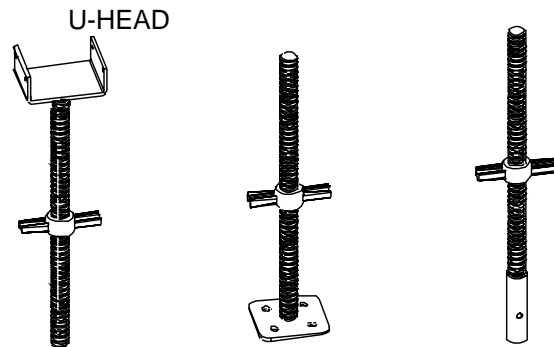
ELECTRODE PLATED
HOT DIP GALVANIZED



SCREW JACKS

1. TYPE OF SCREW JACKS:
BASE PLATE SCREW JACKS;
SOCKET SCREW JACKS;
U-HEAD SCREW JACKS;

2. TYPE OF MATERIAL:
HOLLOW TUBE;
SOLID ROD;



ACCESSORIES

SIDE BRACKETS;
GUARD RAIL POSTS;
POST SHORES;
STEEL PLANKS;
COUPLING PINS;
LOCKING PINS;
CASTERS;

