



**Magup Inc.**

Tel (416) 293-9972  
Fax (416) 291-2999

**TECHNICAL SPECIFICATIONS**

**RING SYSTEMS**

**1. STANDARDS**

<b>MATERIAL</b>	HIGH STRENGTH STEEL TUBE
	PUNCHED ROSETTE (0.39"/10mm THICK )
<b>TUBE &amp; ROSETTE</b>	MIN. YIELD 50KSI, MIN. TENSILE 65KSI, ELONGATION 20%
<b>TUBE DIMENSION</b>	1.900" O.D.X0.125" W.T. (48.6mmX3.2mm)
<b>SURFACE FINISH</b>	HOT DIPPED GALVANIZED (0.0024"/0.06mm ZINC)

<b>PRODUCT CODE</b>	<b>DESCRIPTION</b>	<b>WEIGHT</b>
RS50	0.5M VERTICAL	7.1LBS/3.2KG
RS100	1.0M VERTICAL	12.2LBS/5.5KG
RS150	1.5M VERTICAL	17.7LBS/8.0KG
RS200	2.0M VERTICAL	23.6LBS/10.7KG
RS250	2.5M VERTICAL	28.3LBS/12.8KG
RS300	3.0M VERTICAL	33.8LBS/15.3KG

**2. LEDGER**

<b>MATERIAL</b>	HIGH STRENGTH STEEL TUBE
<b>LEDGER HEAD &amp; WEDGE</b>	STEEL CASTING LEDGER HEAD MIN. YIELD :34KSI ELONGATION 20% (50KSI wedge is available)
<b>TUBE</b>	MIN. YIELD 50KSI, MIN. TENSILE 65KSI, ELONGATION 20%
<b>TUBE DIMENSION</b>	1.900" O.D.X0.125" W.T. (48.6mmX3.2mm)
<b>SURFACE FINISH</b>	HOT DIPPED GALVANIZED (0.0024"/0.06mm ZINC)

<b>PRODUCT CODE</b>	<b>DESCRIPTION</b>	<b>EFFECTIVE LENGTH</b>	<b>WEIGHT</b>
RL10	1' LEDGER	1' (0.305M)	4.0LBS /1.8KGS
RL20	2' LEDGER	2' (0.610M)	6.4LBS/2.9KGS
RL22	2' 2" LEDGER	2'2" (0.650M)	7.2LBS/3.3KGS



**Magup Inc.**

Tel (416) 293-9972  
Fax (416) 291-2999

**TECHNICAL SPECIFICATIONS**

<b>PRODUCT CODE</b>	<b>DESCRIPTION</b>	<b>EFFECTIVE LENGTH</b>	<b>WEIGHT</b>
RL30	3' LEDGER	3' (0.914M)	8.9LBS/4.0KGS
RL36	3' 6" LEDGER	3' 6" (1.067M)	10.4LBS/4.7KGS
RL310	3' 10" LEDGER	3' 10" (1.150M)	11.0LBS/5.0KGS
RL40	4' LEDGER	4' (1.219M)	11.4LBS/5.2KGS
RL50	5' LEDGER	5' (1.524M)	14.0LBS/6.3KGS
RL52	5' 2" LEDGER	5' 2" (1.572M)	15.4LBS/7.0KGS
RL54	5' 4" LEDGER	5' 4" (1.626M)	14.8LBS/6.7KGS
RL60	6' LEDGER	6' (1.829M)	16.5LBS/7.5KGS
RL70	7' LEDGER	7' (2.130M)	19.8LBS/9.0KGS
RL80	8' LEDGER	8' (2.438M)	22.1LBS/10.0KGS
RL100	10' LEDGER	10' (3.050M)	28.2LBS/12.8KGS

**3. DIAGONAL BRACE**

<b>MATERIAL</b>	HIGH STRENGTH STEEL TUBE
<b>LEDGER HEAD &amp; WEDGE</b>	STEEL CASTING LEDGER HEAD MIN. YIELD :34KSI ELONGATION 20% (50KSI wedge is available)
<b>TUBE</b>	MIN. YIELD 50KSI, MIN. TENSILE 65KSI, ELONGATION 20%
<b>TUBE DIMENSION</b>	1.900" O.D.X0.098"/0.125" W.T. (48.6mm x 2.5/3.2mm)
<b>SURFACE FINISH</b>	HOT DIPPED GALVANIZED (0.0024"/0.06mm ZINC)

<b>PRODUCT CODE</b>	<b>DESCRIPTION</b>	<b>EFFECTIVE LENGTH</b>	<b>WEIGHT [LBS]</b>
RB310	3'10" DIAGONAL BRACE	3'10" (1.150M)	18.3LBS/8.3KGS
RB52	5'2" DIAGONAL BRACE	5'2" (1.572M)	19.6LBS/8.9KGS
RB70	7' DIAGONAL BRACE	7' (2.130M)	21.8LBS/9.9KGS
RB80	8' DIAGONAL BRACE	8' (2.438M)	23.1LBS/10.5KGS
RB100	10' DIAGONAL BRACE	10' (3.050M)	26.2LBS/11.9KGS



**Magup Inc.**

Tel (416) 293-9972  
Fax (416) 291-2999

**TECHNICAL SPECIFICATIONS**

**4. DOUBLE LEDGER**

<b>MATERIAL</b>	HIGH STRENGTH STEEL TUBE
<b>LEDGER HEAD &amp; WEDGE</b>	STEEL CASTING LEDGER HEAD MIN. YIELD :34KSI ELONGATION 20% (50KSI wedge is available)
<b>TUBE</b>	MIN. YIELD 50KSI, MIN. TENSILE 65KSI, ELONGATION 20%
<b>TUBE DIMENSION</b>	1.900" O.D.X0.098"/0.125" W.T. (48.6mm x 2.5/3.2mm)
<b>SURFACE FINISH</b>	HOT DIPPED GALVANIZED (0.0024"/0.06mm ZINC)

<b>PRODUCT CODE</b>	<b>DESCRIPTION</b>	<b>EFFECTIVE LENGTH</b>	<b>WEIGHT [LBS]</b>
RDL52	5'2" DOUBLE LEDGER	5'2" (1572 M)	25.2LBS/11.4KGS
RDL70	7' DOUBLE LEDGER	7' (2130 M)	34LBS/15.4KGS
RDL100	10' DOUBLE LEDGER	10' (3050 M)	48.9LBS/22.2KGS

**TRUSSED LEDGER**

<b>MATERIAL</b>	HIGH STRENGTH STEEL TUBE
<b>LEDGER HEAD &amp; WEDGE</b>	STEEL CASTING LEDGER HEAD MIN. YIELD :34KSI ELONGATION 20% (50KSI wedge is available)
<b>TUBE</b>	MIN. YIELD 50KSI, MIN. TENSILE 65KSI, ELONGATION 20%
<b>TUBE DIMENSION</b>	1.900" O.D.X0.098"/0.125" W.T. (48.6mm x 2.5/3.2mm)
<b>SURFACE FINISH</b>	HOT DIPPED GALVANIZED (0.0024"/0.06mm ZINC)

<b>PRODUCT CODE</b>	<b>DESCRIPTION</b>	<b>EFFECTIVE LENGTH</b>	<b>WEIGHT [LBS]</b>
RTL140	14' TRUSSED LEDGER	14' (4.267 M)	105.7LBS/48.0KGS
RTL170	17' TRUSSED LEDGER	17' (5.182 M)	127.1LBS/57.7KGS
RTL210	21' TRUSSED LEDGER	21' (6.401 M)	153.3LBS/69.6KGS

\* EFFECTIVE LENGTH IS MEASURED CENTER TO CENTER OF STANDARDS.

\*\* OTHER DIMENSIONS ARE AVAILABLE UPON REQUEST.



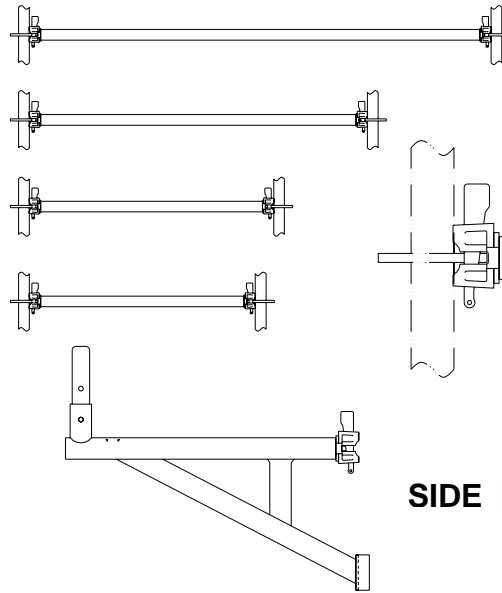
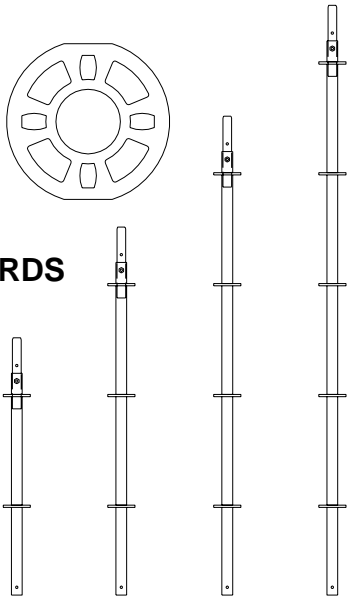
**Magup Inc.**

Tel (416) 293-9972

Fax (416) 291-2999

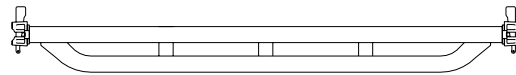
**TECHNICAL SPECIFICATIONS**

**STANDARDS**

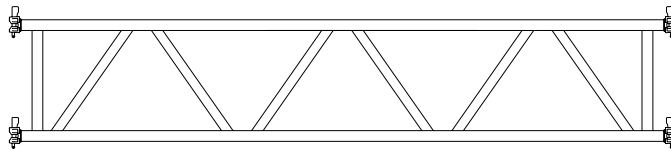


**LEDGERS**

**SIDE BRACKET**

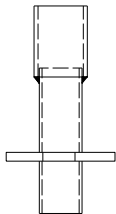


**DOUBLE LEDGER**



**TRUSSED LEDGER**

**BASE COLLAR**



**DIAGONAL BRACE**

